

Transistors for Very High-Definition CRT Display Video Output Use

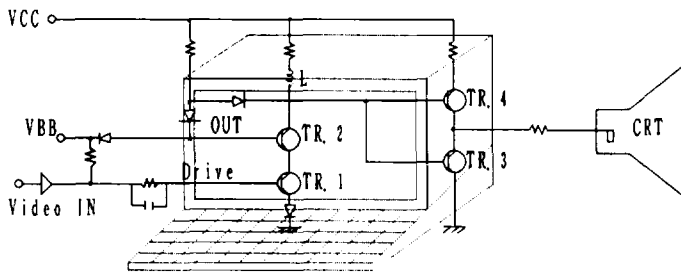
Our transistors for CRT display use are fabricated using our original process technology. They are designed to meet the characteristic requirements for CRT use.

★Features ★Adoption of FBET process

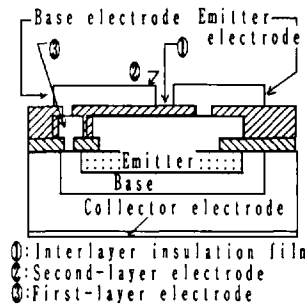
- *Less parasitic capacitance ⇒ Reduction (1/2 reduction compared with predecessors) in Cob (output capacitance), Cre (reverse transfer capacitance)
- *Increase in effective area of chip ⇒ Increase (30% increase) in Ic (current capacity)
- *Ideal pattern formation, fast switching time, high energy handling capability, excellent HF characteristic
- *Complementary PNP and NPN types (Case outline: FLP, TO-126, TO-126ML, TP, TO-220, TO220ML)

★Use ★Wide-band amp (Video band up to 100MHz)

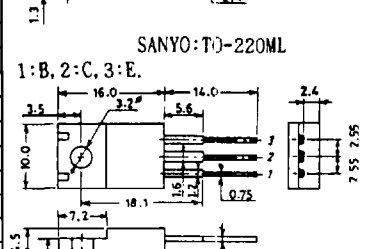
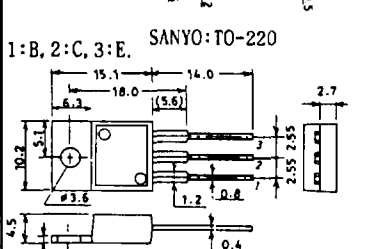
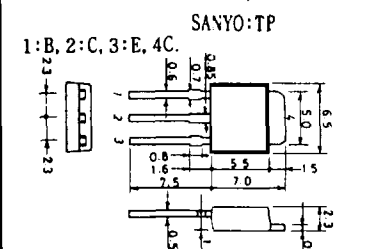
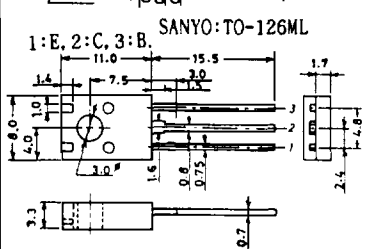
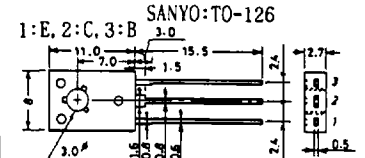
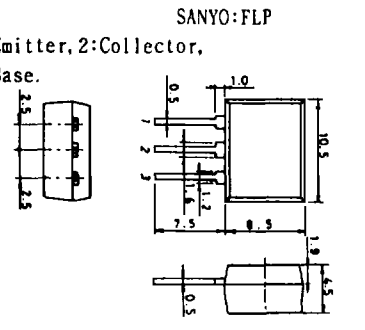
BLOCK DIAGRAM



FBET STRUCTURE



Case Outlines (unit:mm)



※:Tc=25°C. ◆:Tc=50°C. For PNP, (-) sign is omitted.

Type No. PNP/NPN	Package	Absolute Maximum Ratings/Ta=25°C				Electrical Characteristics/Ta=25°C							
		V _{CBO} (V)	V _{CEO} (V)	I _C (A)	P _C (W)	f _T typ (MHz)	V _{CE} · I _C (V) (mA)	C _{ob} typ (PF)	C _{re} typ (PF)	V _{CB} (V)	h _{FE}		
2SA1402/2SC3596	TO-126	80	60	0.3	※8	700	10	100	3.0/2.3	2.3/1.8	30	40-320	
2SA1403/2SC3597		80	60	0.5	※10	800	10	100	5.2/3.4	4.6/2.9	30	40-320	
2SA1404/2SC3598		120	120	0.2	※8	500	10	50	2.7/2.0	2.1/1.6	30	40-320	
2SA1405/2SC3599		120	120	0.3	※8	500	10	50	4.3/2.9	3.8/2.5	30	40-320	
2SA1406/2SC3600		200	200	0.1	※7	400	30	30	2.3/1.8	1.7/1.4	30	40-320	
2SA1407/2SC3601		200	200	0.15	※7	400	30	50	3.0/2.5	2.5/2.0	30	40-320	
2SA1723	30	20	0.3	※5	1500	5	100	5.8	5.0	10	15-100		
2SC4271	30	20	0.3	※5	2200	5	50	3.9	3.2	10	40-200		
2SC3595	30	20	0.5	※5	2000	5	100	6.0	4.6	10	40-200		
2SC4821	30	20	0.5	1.3	2000	5	100	6.0	4.6	10	40-200		
2SA1848/2SC4822	FLP	80	70	0.3	1.3	600	10	100	3.1/2.4	2.4/1.9	30	60-320	
2SA1849/2SC4823		80	70	0.5	1.3	700	10	100	5.4/3.6	4.8/3.1	30	60-320	
2SA1850/2SC4824		120	120	0.2	1.3	400	10	50	2.3/1.8	2.2/1.7	30	60-320	
2SA1851/2SC4825		120	120	0.3	1.3	400	10	50	4.4/3.1	4.0/2.7	30	60-320	
2SA1852/2SC4826		200	200	0.1	1.3	300	30	30	2.4/1.9	2.0/1.5	30	60-320	
2SA1853/2SC4827		200	200	0.2	1.3	300	30	50	3.2/2.6	2.7/2.2	30	60-320	
2SA1536/2SC3951	TO-126 ML	80	70	0.3	※8	600	10	100	3.1/2.4	2.4/1.9	30	40-320	
2SA1537/2SC3952		80	70	0.5	※10	700	10	100	5.4/3.6	4.8/3.1	30	40-320	
2SA1538/2SC3953		120	120	0.2	※8	400	10	5	2.8/2.1	2.2/1.7	30	40-320	
2SA1539/2SC3954		120	120	0.3	※8	400	10	5	4.4/3.1	4.0/2.7	30	40-320	
2SA1540/2SC3955		200	200	0.1	※7	300	30	30	2.4/1.9	1.8/1.5	30	40-320	
2SA1541/2SC3956		200	200	0.2	※7	300	30	50	3.2/2.7	2.7/2.2	30	40-320	
2SA1749/2SC4564		200	200	0.3	※10	400	30	100	5.0/4.2	4.2/3.4	30	40-320	
2SA1750/2SC4565		140	140	0.5	※10	500	30	100	5.9/5.0	5.3/4.4	30	40-320	
2SA1777/2SC4623		250	250	0.3	※10	400	30	100	5.0/4.2	4.2/3.4	30	40-200	
2SC3950		30	20	0.5	※5	2000	5	100	6.0	4.6	10	40-200	
2SC4563		100	80	0.5	※10	1200	10	100	4.4	3.8	30	30-200	
2SC4660		30	20	0.3	※8	2200	5	100	3.9	3.2	10	40-200	
2SA1875/2SC4976	TP	200	200	0.3	※12	400	10	100	5.0/4.2	4.2/3.4	30	60-320	
2SA1474/2SC3780		80	60	0.8	◆15	800	10	100	5.3/3.5	4.7/3.0	30	40-320	
2SA1475/2SC3781		120	120	0.4	◆15	500	10	50	4.4/3.0	3.9/2.6	30	40-320	
2SA1476/2SC3782		200	200	0.2	◆15	400	30	50	3.1/2.6	2.6/2.1	30	40-320	
2SA1751/2SC4566		200	200	0.3	※20	400	30	100	5.0/4.2	4.2/3.4	30	40-320	
2SA1752/2SC4567		140	140	0.5	※20	500	30	100	5.9/5.0	5.3/4.4	30	40-320	
2SC4411	100	80	0.5	※15	1200	10	100	4.4	3.8	30	30-200		
2SA1696/2SC4473	TO-220 ML	120	120	0.4	◆10	400	10	50	4.4/3.1	4.0/2.7	30	40-320	
2SA1697/2SC4474		200	200	0.2	◆10	300	30	50	3.2/2.7	2.7/2.2	30	40-320	

These specifications are subject to change without notice.