



Audio Circuit Denmark

www.audio-circuit.dk

LYNX

Power Amplifier Main PCB v.2.2

PCB Layout

16.11.2003

Contents

Page 2: Silk Screen

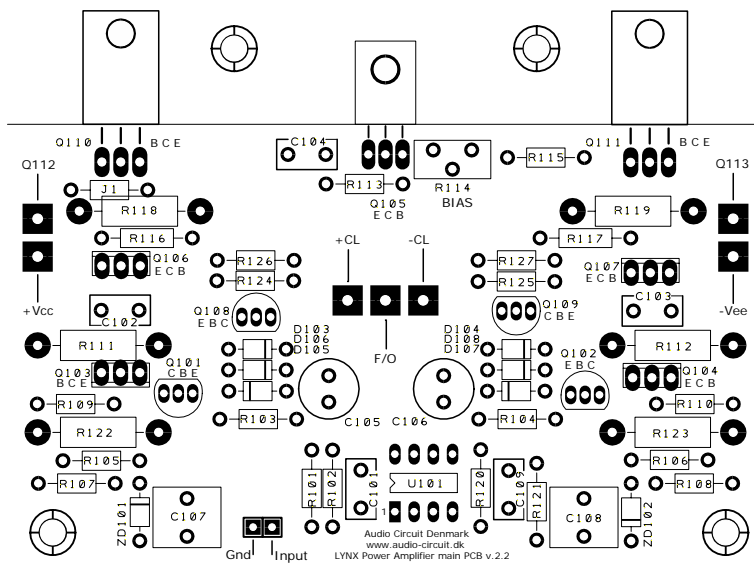
Page 3: Bottom layer

Page 4: Component List

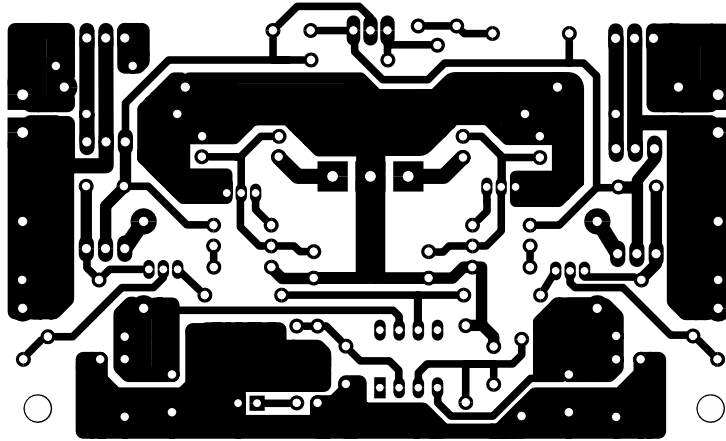
Page 5: Schematics

Disclaimer

The LYNX Power Amplifier are intended as a non-commercial diy-project, and it is therefore builder's responsibility to assure that assembly and wiring are made correct, and that suitable components are used. Audio Circuit Denmark can therefore under no circumstances be held responsible for any incorrect information or documentation, damages to persons and material, loss of money or what so ever.



LYNX Power Amplifier main PCB v.2.2 by Audio Circuit Denmark





Audio Circuit Denmark

www.audio-circuit.dk

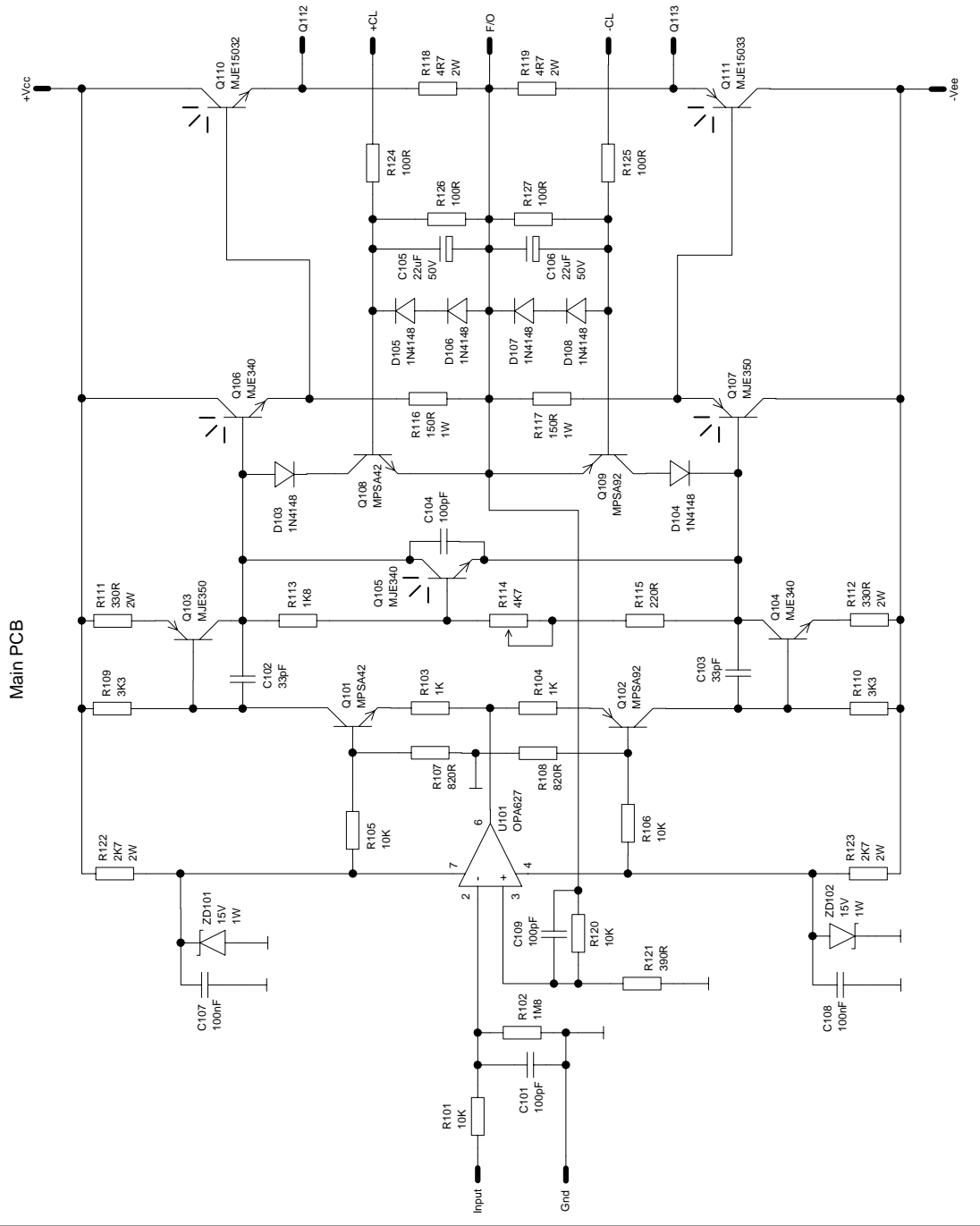
Component List (updated 16.11.2003)

LYNX Power Amplifier main PCB v.2.1 and v.2.2 update

Item	Description	Mfr./Type	Alternatives	Notes
R101, R105, R105, R120	10K, 0.25W			1%
R102	1M8, 0.25W			1%
R103, R104	820R, 0.25W			1%
R107, R108	1K, 0.25W			1%
R109, R110	3.3K, 0.25W			1%
R111, R112	330R, 1W			Non-Inductive
R113	1K8, 0.25W			1-5%
R115	220R, 0.25W			1-5%
R116, R117	180R, 1W			Non-Inductive
R118, R119	4R7, 2W			Non-Inductive
R121	390R, 0.25W			1-5%
R122, R123	2K7, 2W			Non-Inductive
R124, R125, R126, R127	100R, 0.25W			1-5%
R114	4K7 potentiometer	Cermet, Bourns	Equivalent	10-24 turns
C101, C104	100pF	WIMA FKP 2	Equivalent	
C102, C103	33pF	WIMA FKP 2	Equivalent	
C105, C106	22uF, 50V			Non-Polarity
C107, C108	0.1uF	VISHAY MKP 1837	Equivalent	
C109	100pF	WIMA FKP 2	Equivalent	
U101	OPA627		OPA27	Low DC-Offset opamp
Q101, Q108	MPSA42	Philips	Equivalent	
Q102, Q109	MPSA92	Philips	Equivalent	
Q103, Q107	MJE350	Fairchild	Equivalent	
Q104, Q105, Q106	MJE340	Fairchild	Equivalent	
Q110	MJE15032	Motorola	Equivalent	
Q111	MJE15033	Motorola	Equivalent	
D103, D104, D105, D106, D107, D108	1N4148		Equivalent	
ZD101, ZD102	15V Zener, 1W			

Output Stage (not on PCB)

Item	Description	Mfr./Type	Alternatives	Notes
R131, R132, R133, R134, R135, R137, R138, R139	0,33R, 5W		0,22R, 5W	Non-Inductive
R139	2R7, 5W			Non-Inductive
R140	10R, 5W			Non-Inductive
C110	0.1uF	VISHAY MKP 1837	Equivalent	
L101	2uH			20A rating
Q112, Q113, Q114, Q115	MJL21194		Equivalent	On main heatsink
Q116, Q117, Q118, Q119	MJL21193		Equivalent	On main heatsink
D109, D110	1N5059		Equivalent	



Main PCB

Output Stage

Schematic notes

Unless otherwise designated:
 All resistors in Ohms, 1%, 0.25 Watt
 Capacitors in uF, 100 Volt
 Q106 and Q107 fitted with TO-220 heatsinks
 R139, R140, L101 and C131 are placed on Speaker Binding Posts

Date	Date	Date	In	Project	Client	Copyright
18.06.2003	08.09.2003	11.11.2003	JD	LYNX Power Amplifier	Public	Audio-Circuit Denmark
Rev: 2.1	Rev: 3.0	Rev: 3.1	Dept.	File name	File name	Sheet
Chk	Chk	Chk	R&D	LYNX Amplifier v2.2E	LYNX_v2-2_Overview	1 of 1

UJ.U.L. audio-circuit.dk